


## Accessories (Optional)


### Single-end Connector Cable (2 cables per set, for emitter and receiver)

For wiring with safety circuit such as single safety relay, safety relay unit, and safety controller

| Appearance  | Cable length | Specifications        | Model     |
|---|--------------|-----------------------|-----------|
|  | 3 m          | M12 connector (8-pin) | F39-JC3A  |
|   | 7 m          |                       | F39-JC7A  |
|   | 10 m         |                       | F39-JC10A |
|   | 15 m         |                       | F39-JC15A |
|   | 20 m         |                       | F39-JC20A |


### Double-end Connector Cable (2 cables per set, for emitter and receiver)

For connection with F3SP-B1P control unit, and for extension when series-connected \*




| Appearance  | Cable length | Specifications        | Model     |
|---|--------------|-----------------------|-----------|
|  | 0.5 m        | M12 connector (8-pin) | F39-JCR5B |
|   | 1 m          |                       | F39-JC1B  |
|   | 3 m          |                       | F39-JC3B  |
|   | 5 m          |                       | F39-JC5B  |
|   | 7 m          |                       | F39-JC7B  |
|   | 10 m         |                       | F39-JC10B |
|   | 15 m         |                       | F39-JC15B |
|   | 20 m         |                       | F39-JC20B |

\*To extend the cable length under series connection, use F39-JJR3W and F39-JC□B in combination.

### Power Cable (Included with the main unit) (2 cables per set, for emitter and receiver)

| Appearance  | Cable length | Model     |
|---|--------------|-----------|
|  | 0.3 m        | F39-JJR3K |

### Series Connection Cable (2 cables per set, for emitter and receiver)

| Type                                 | Appearance  | Cable length | Model      | Application   |
|--------------------------------------|---|--------------|------------|---|
| Series connection cable              |  | 0.3 m        | F39-JJR3W  | For series connection *1<br>When using the Water-resistant Case. *2                                       |
| Extension cable                      |  | 0.5 to 15 m  | F39-JC□B   | To change series connection length in combination with F39-JJR3W  |
| Side-by-side Series connection cable |  | 0.06 m       | F39-JJR06L | Dedicated series connection cable with minimum length, used in place of the sensor's cable with connector |
|                                      |   | 0.15 m       | F39-JJR15L |   |

\*1. Total cable length of series connection is 0.6 m to connect to connector cable of the main sensor unit.

For series connection with minimum length, use the F39-JJR06L or F39-JJR15L.

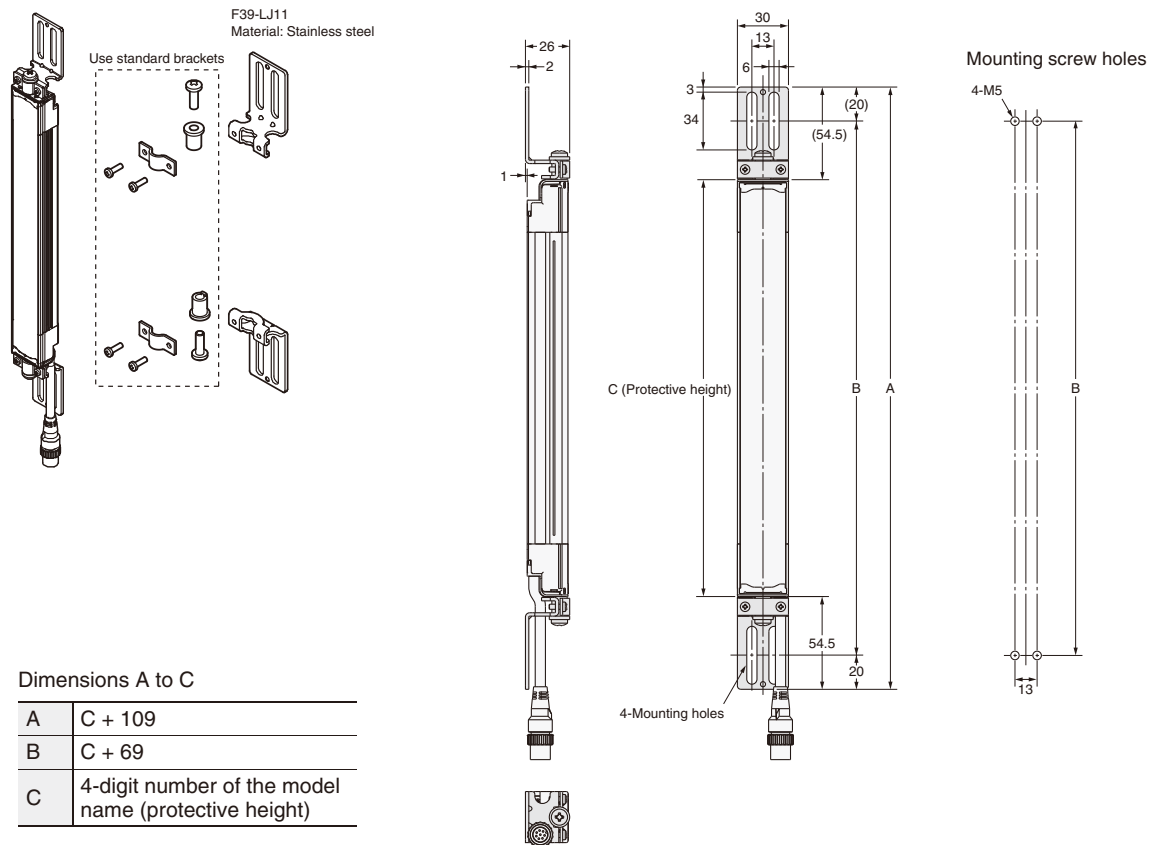
\*2. When using the F39-EJ□□□□-L/D Water-resistant Case in series connection configurations, use the special series connection cables for the Water-resistant Case. Refer to page 14 for details.

**F3W-C replacement correspondence table (F3W-C mounting holes can be used without modification)**  
 When replacing F3W-C□□□□ with F3SJ-A□□□□□30

| F3W-C    |                   | Replacement F3SJ |                   |
|----------|-------------------|------------------|-------------------|
| Model    | Protective height | Model            | Protective height |
| F3W-C044 | 120               | ---              | ---               |
| F3W-C084 | 280               | F3SJ-A0320□30    | 320               |
| F3W-C124 | 440               | F3SJ-A0470□30    | 470               |
| F3W-C164 | 600               | F3SJ-A0620□30 *  | 620               |
| F3W-C204 | 760               | F3SJ-A0795□30 *  | 795               |
| F3W-C244 | 920               | F3SJ-A0945□30 *  | 945               |

\*New holes must be drilled for the intermediate bracket.

**Using Top/Bottom Mounting Bracket C (F39-LJ11)**



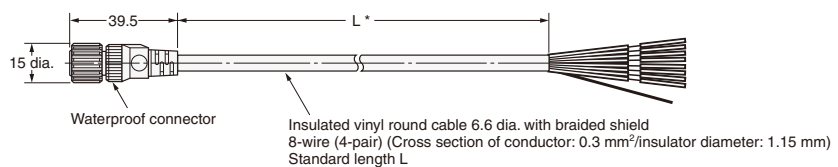
**Accessories**

**Single-end Connector Cable**

- F39-JC3A (L = 3 m)
- F39-JC7A (L = 7 m)
- F39-JC10A (L = 10 m)
- F39-JC15A (L = 15 m)
- F39-JC20A (L = 20 m)



Color: Emitter (gray)  
Receiver (black)



\* Cables with L=3, 7, 10, 15, and 20 m are available.